



SIMPLE LIFE



SIMPLE LIFE



## Boater Drive, Dunstable, LU5

£1,675 PCM

Simple Life Homes are proud to present a collection of two and three bedroom homes to rent in the attractive market town of Houghton Regis.

The welcoming central hallway of the Grantham sits in between the living room and the kitchen. A house designed with you in mind, the spacious lounge provides the perfect area to relax, whilst the dining/kitchen area provides a great place to spend time and entertain with its French windows opening on to the garden. A WC is conveniently situated off the hallway, completing the downstairs.

Upstairs, the house has a large master bedroom with fitted, mirrored wardrobes, and a further two bedrooms. A stylish family bathroom with a separate bath and shower provides the best of both worlds, whilst a storeroom on the landing provides a space to store bits and pieces.

Situated next to its sister-site Millard Grange, residents can benefit from excellent transport connectivity, with the M1 and Leagrave train station within close proximity.

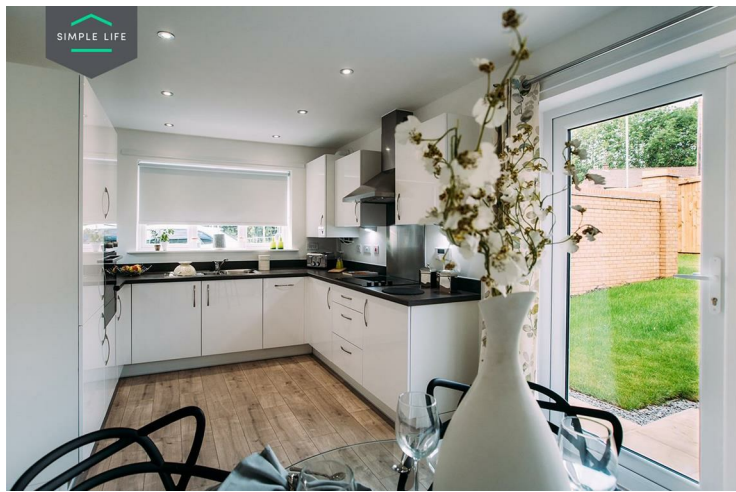
There are plenty of shops, restaurants, bars and cafes to choose from in Houghton Regis and Dunstable, all within a close reach to Coppice Hill. The site is also closely located to Luton and London, making for a great location for those who want endless opportunities to travel and play.

Educational needs are well catered for at Coppice Hill with 25 Ofsted rated 'good' or 'outstanding' schools in the local area including Beecroft Academy and Houghton Regis Primary.

To access the site, please follow signs for Bidwell West and use postcode LU5 6SF.

Deposit £1930  
Holding Deposit £380  
Unfurnished  
Council Tax C  
Available 17th March 2026





## Key Features

- Car Parking Space
- Dishwasher
- Washing machine
- Carpets up the stairs and in the bedrooms
- Private back garden
- Security Alarm
- Fridge-freezer
- Modern kitchen worktops and units
- Wood-effect flooring in the kitchen

## Location

